

USE OF REGIONAL CLIMATE MODELS DATA FOR GROUNDWATER RECHARGE MODELING IN BALTIC ARTESIAN BASIN

Ilze Klints, Juris Senņikovs, Jānis Virbulis, Andrejs Timuhins (tim@modlab.lv)

Laboratory for Mathematical Modelling of Environmental and Technological Processes, Faculty of Physics and Mathematics, University of Latvia

Area of study



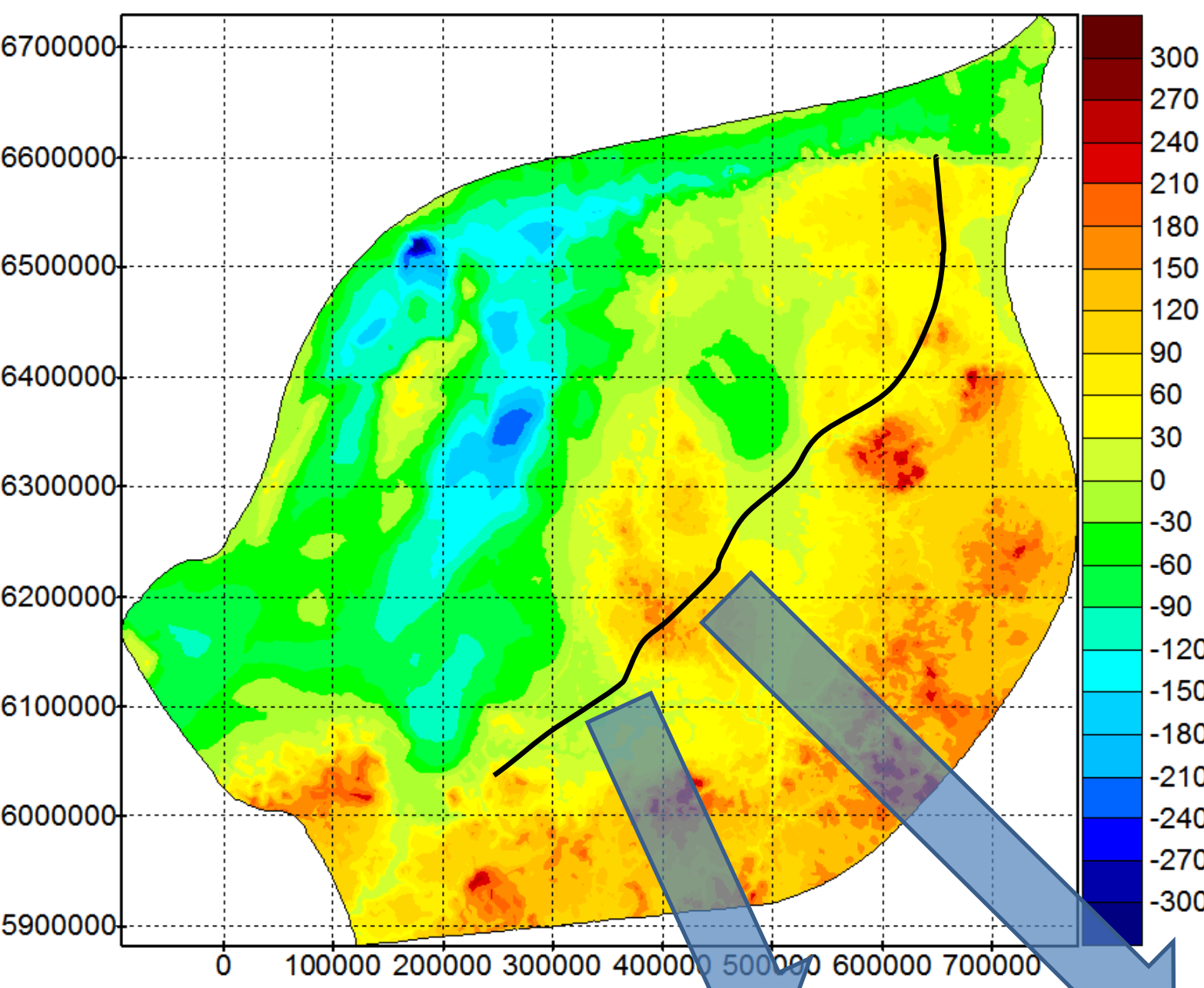
Baltic artesian basin (BAB) covers about 480000 square kilometers.

BAB includes territory of Latvia, Lithuania, Estonia, parts of Poland, Russia, Belarus and Baltic Sea.

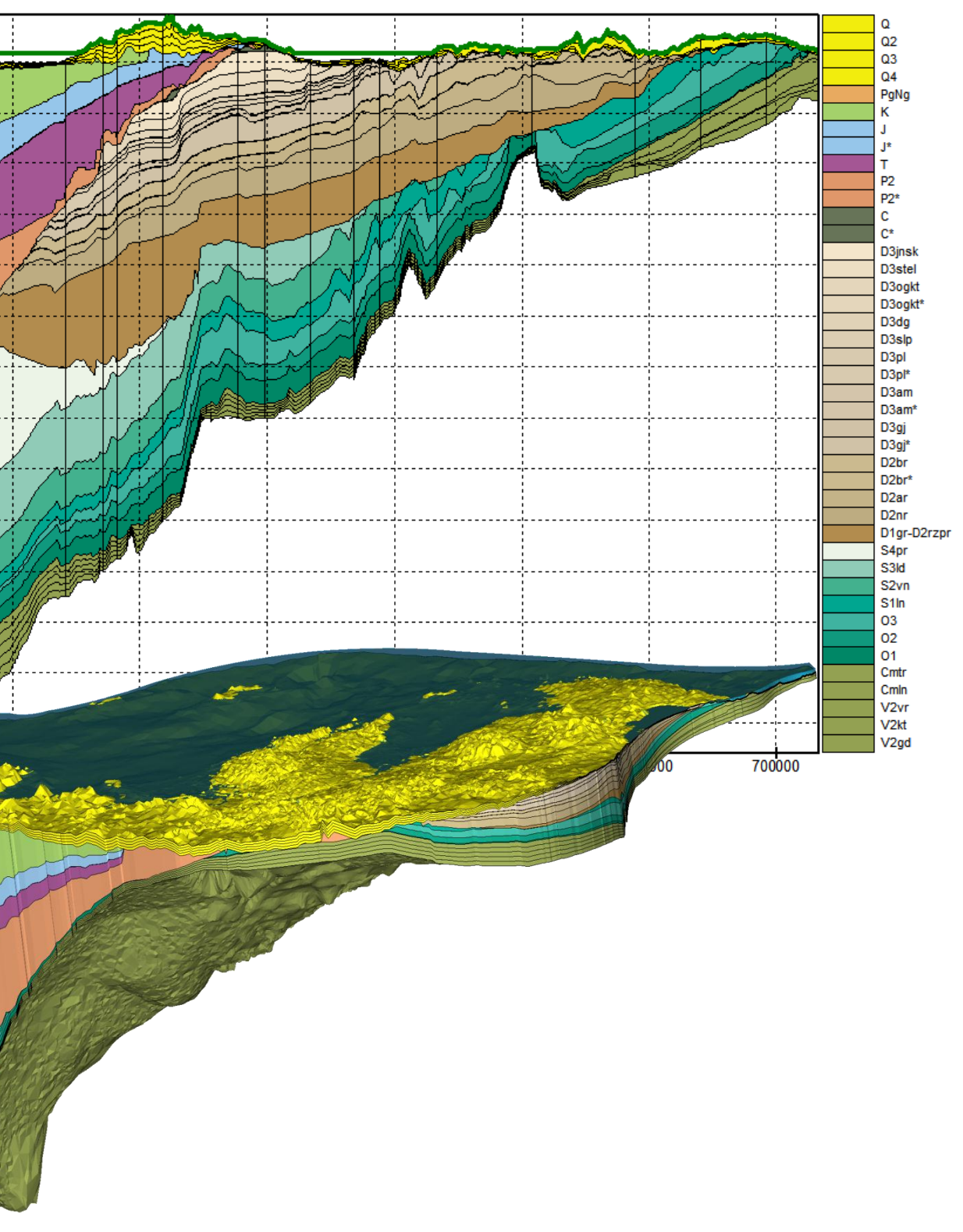
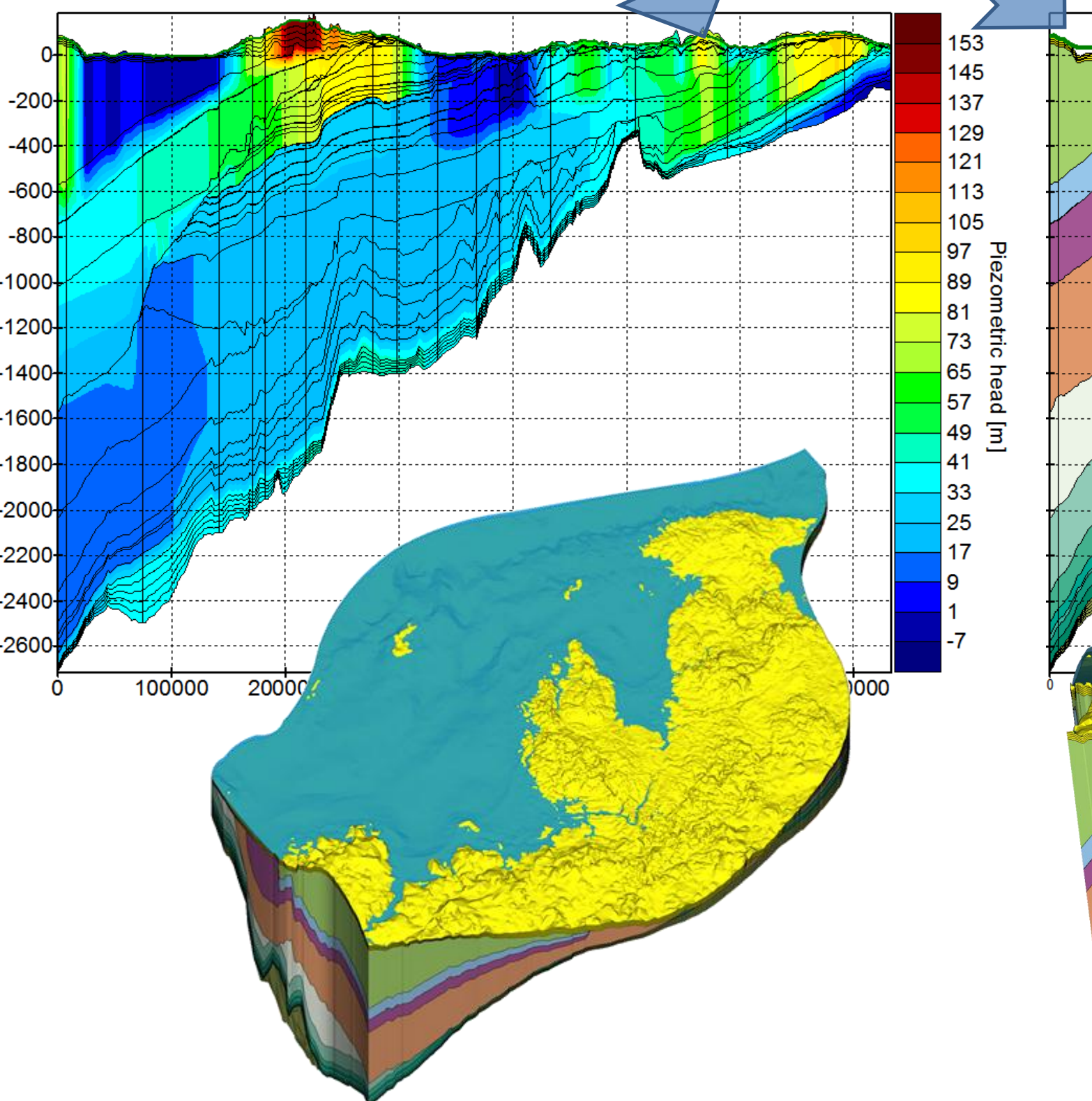
It is a multi-layered and complex hydrogeological system up to 5000 m deep.

It is the main drinking water source in the Baltic countries

Hydrogeological mathematical model



The closed hydrogeological mathematical model for the BAB is developed in University of Latvia and reference calculations made in steady state mode. No-flow boundary condition is applied on the bottom and side boundaries of BAB. Hydraulic head is fixed on the seabed and largest lakes, and along the main river lines. Main water supply wells also are presented in the model as a pointwise water extraction. The model results are piezometric head in each mesh point in each layer and flow velocity field.



The aim of the work

The aim of the present study is improving of the infiltration model, as well as preserving a short computation time (several minutes) for the piezometric head. Direct solution of improvement of the infiltration would be a usage of the advanced hydrological models. However, an accurate hydrological model requires a lot of computational power. It should couple meteorological and hydrological parameters and requires additional calibration.

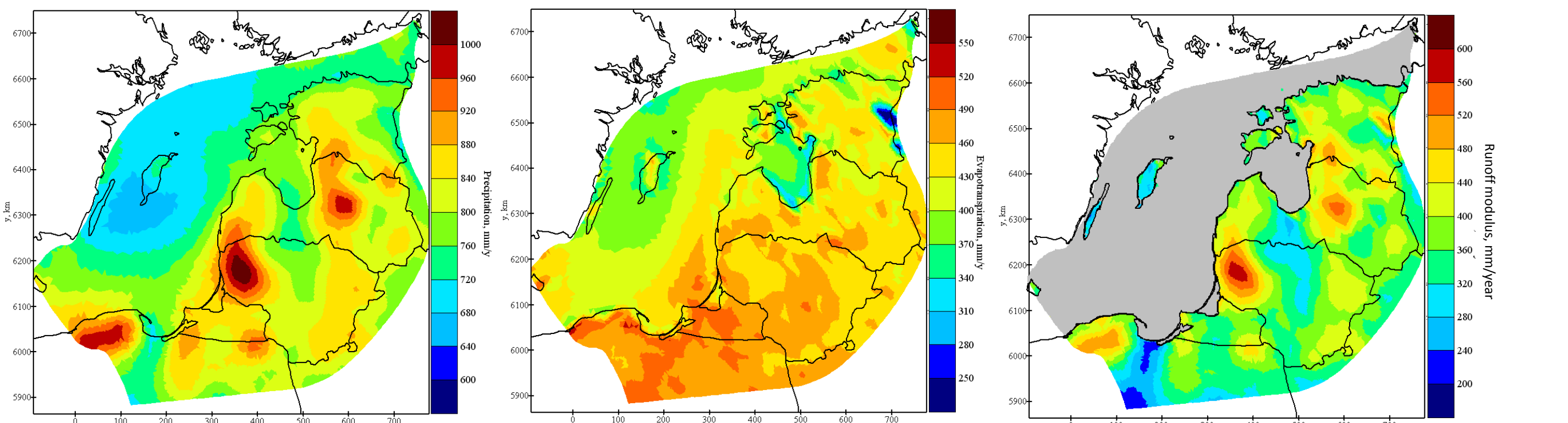
Precipitation is the main source of the groundwater recharge in the BAB region. Infiltration parameterization is responsible for this water source in BAB model.

During the early stage of calibration of BAB hydrogeological model an automatic calibration for the hydraulic conductivities of permeable layers and single infiltration rate was attempted. Performing BAB model calibration it was noted that the differences of calculated and observed hydraulic heads (used for calculating the calibration penalty function) can be reduced by introducing a spatially distributed infiltration model.

Runoff module

The regional climate model (KNMI-RACMO2 25 km resolution) results from ENSEMBLES project are used for the spatially distributed infiltration field calculation. The infiltration field is constructed as weighted difference of 30 year averaged precipitation and evaporation fields. The weight value is calibrated and a considerable decrease of the value of penalty function of the groundwater model is obtained (in comparison with penalty function value of the BAB model with constant infiltration). Impact of near and far future climate changes on the groundwater is estimated using the climate projections provided by RCM

Contemporary climate (mean values 1961-1990)



Penalty function

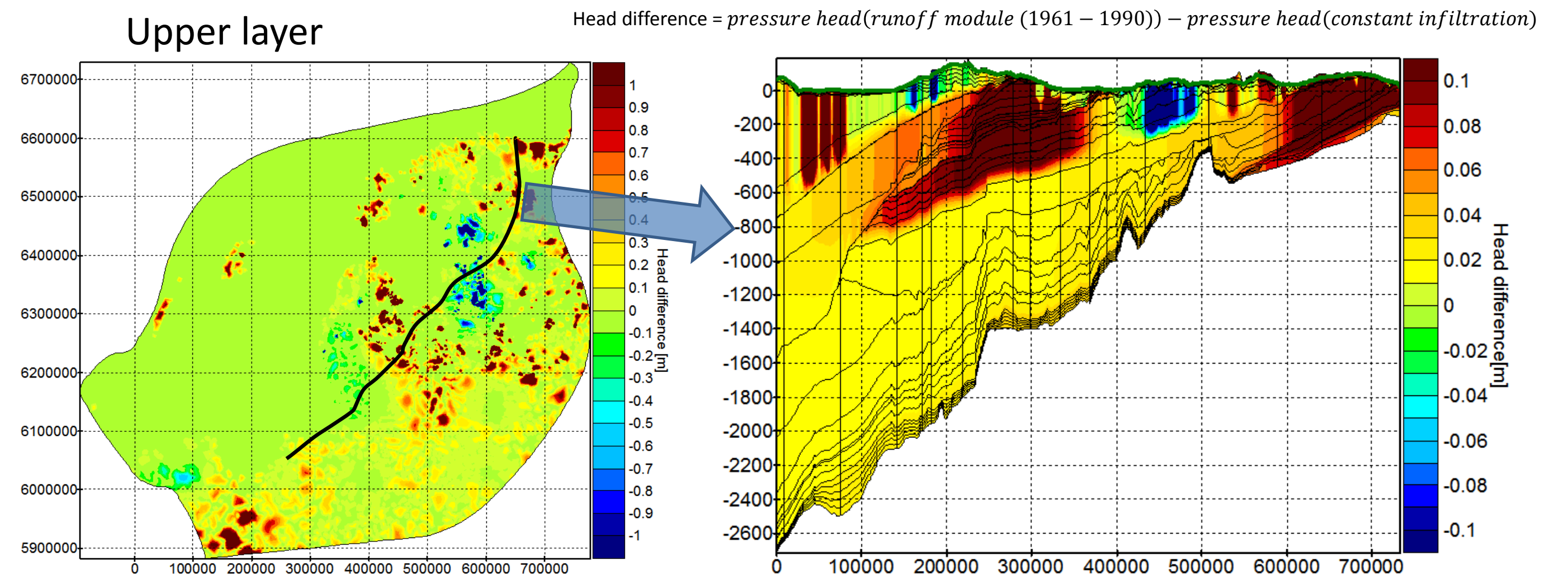
$$M = \sum_{i=1..N} \frac{1}{N_i} \left(w_i^h \sum_{j=1..N_i} w_j^t w_j^s (\rho_i p_j^{obs} - p_j^{mod})^2 \right)$$

where w_i^h is geological layer i weight, w_j^s is spatial weight for borehole j , w_j^t temporal weight for borehole j ; p_j^{obs} , p_j^{mod} are observed and calculated hydraulic heads, ρ_i is water density correction factor

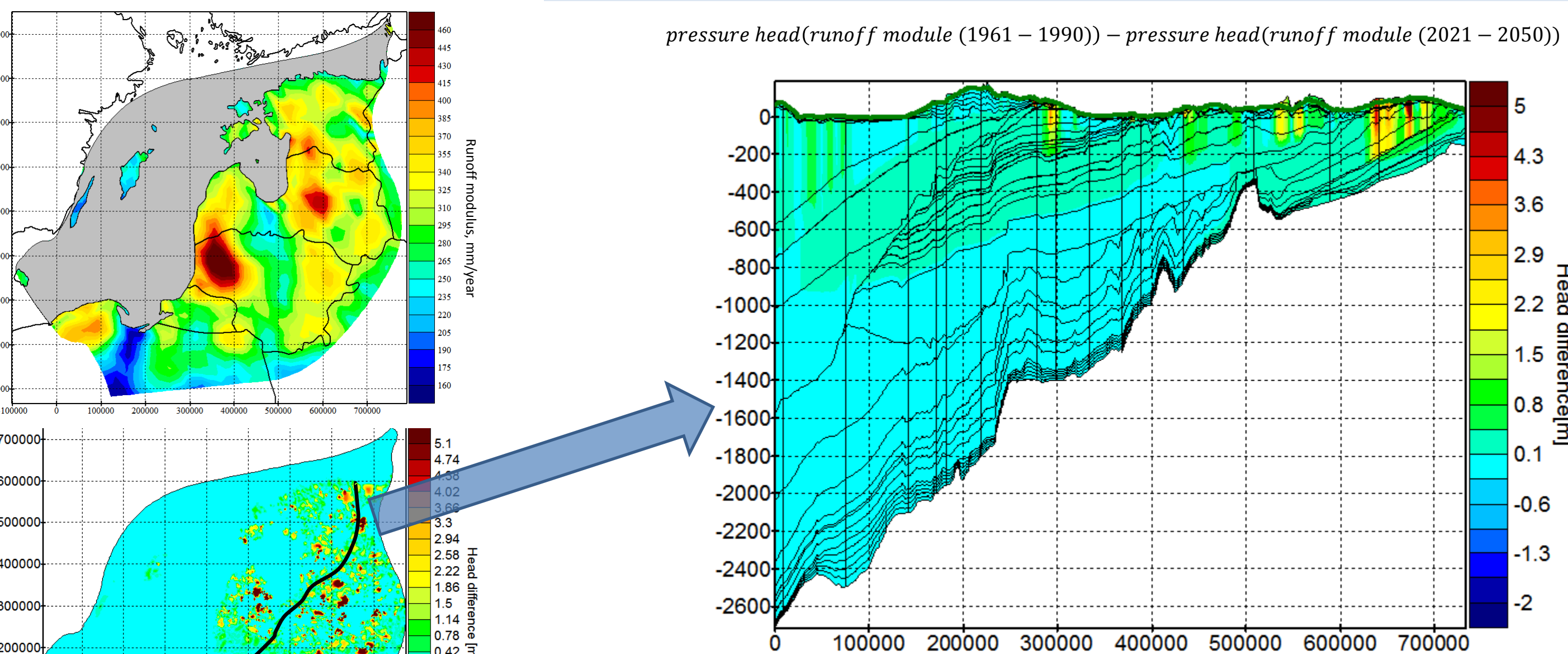
Infiltration calibration results

Infiltration method	Mean hydraulic head difference	Penalty function	Optimized infiltration
Runoff modulus	-8.7	1591	weight=0.55
Constant	-15.0	1587	value=253 mm/year

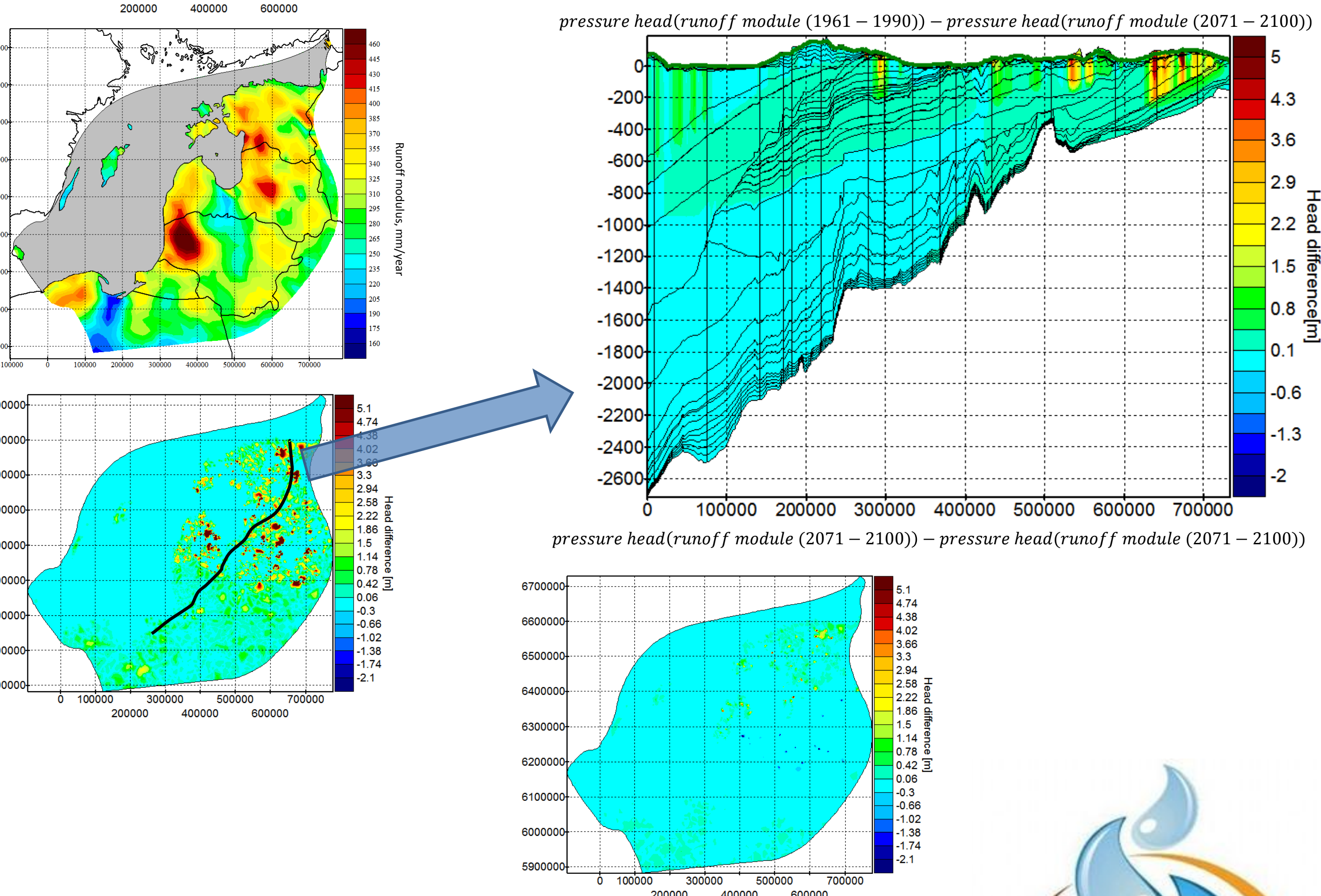
Runoff differences



Near future (2021-2050)



Far future (2071-2100)



Acknowledgements

This research was supported by the European Social Fund project „Establishment of interdisciplinary scientist group and modelling system for groundwater research” (Project Nr. 2009/0212/1DP/1.1.1.2.0/09/APIA/VIAA/060). Regional climate model data provided through the ENSEMBLES data archive, funded by the EU FP6 Integrated Project ENSEMBLES (Contract number 505539).



This study is supported by the European Social Fund project „Establishment of interdisciplinary scientist group and modelling system for groundwater research”. Project No. 2009/0212/1DP/1.1.1.2.0/09/APIA/VIAA/060

